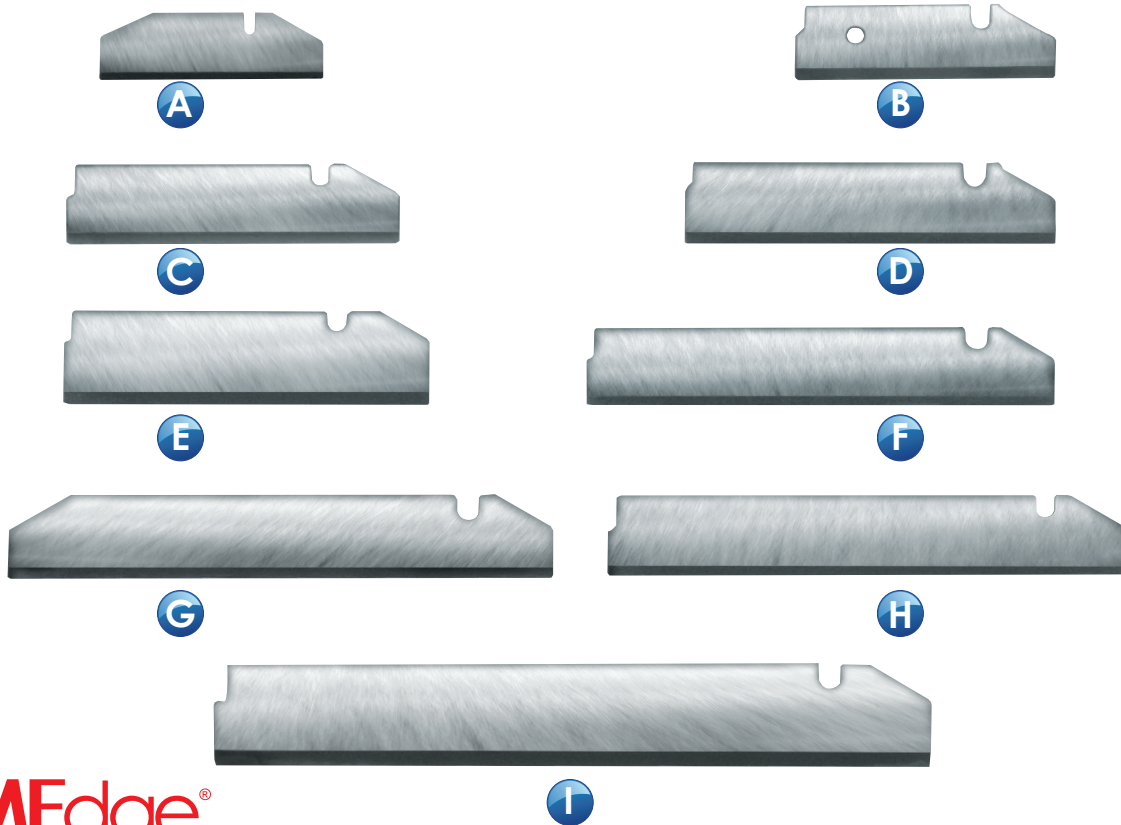


# Weiler®-Style Insert Blades

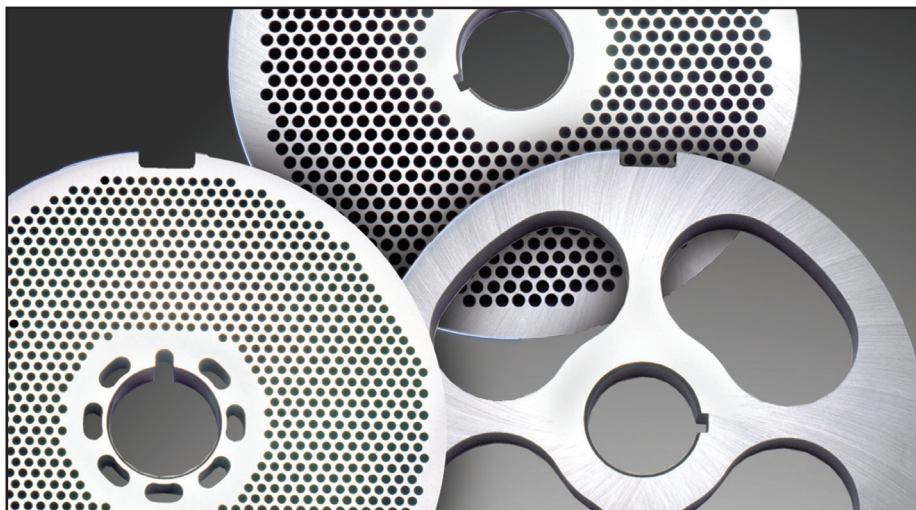
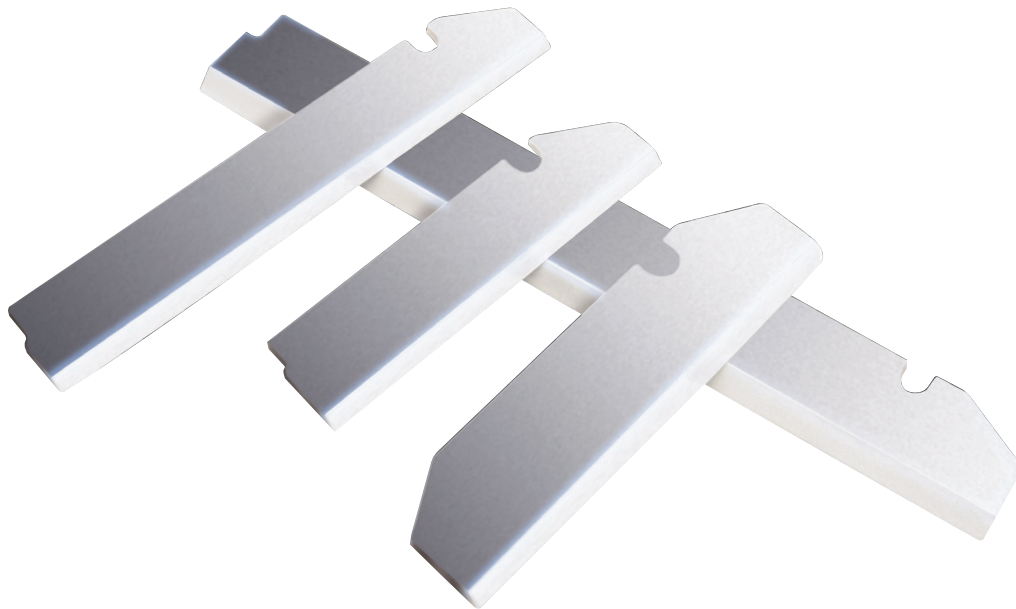
*PRIMEEdge knife insert blades for Weiler®-style grinders*



**PRIMEEdge®**  
COZZINI CUTTING EDGES  
AND SHARPENING SOLUTIONS

	Length	Sold in packs of	Weiler® Part No.	PRIMEEdge Part No.
<b>A</b>	1 <sup>7</sup> / <sub>8</sub> ", for 6" plates	50	108-1972N42	<b>GKW-6-1972</b>
<b>B</b>	2 <sup>3</sup> / <sub>16</sub> ", for 7" plates	50	108-1967N42	<b>GKW-6-1967</b>
<b>C</b>	2 <sup>5</sup> / <sub>8</sub> ", for 8 <sup>5</sup> / <sub>8</sub> " standard plates	50	108-1458N42	<b>GKW-6-1458</b>
<b>D</b>	2 <sup>7</sup> / <sub>8</sub> ", for 8 <sup>5</sup> / <sub>8</sub> " bone collector plates	50	108-2448N42	<b>GKW-6-2448</b>
<b>E</b>	3", for 11" plates with 4" center hole	50	108-1991N42	<b>GKW-7-1991</b>
<b>F</b>	3 <sup>3</sup> / <sub>4</sub> ", for 11" standard plates	50	108-1154N42	<b>GKW-7-1154</b>
<b>G</b>	3 <sup>7</sup> / <sub>8</sub> ", for 11" CBCA bone collector plates	50	108-2450N42	<b>GKW-7-2450</b>
<b>H</b>	4 <sup>1</sup> / <sub>16</sub> ", for 11" bone collector plates	50	108-2440N42	<b>GKW-7-2440</b>
<b>I</b>	5 <sup>3</sup> / <sub>8</sub> ", for 16" standard plates	25	108-1155N42	<b>GKW-8-1155</b>

# Weiler®\*-Style Insert Blades



**PRIME**Edge®  
COZZINI CUTTING EDGES  
AND SHARPENING SOLUTIONS

877-322-EDGE(3343) • [primedge.com](http://primedge.com) • [sales@primedge.com](mailto:sales@primedge.com) • Fax:224-265-6638

**PRIME**Edge, Inc. • Cutting Edges • Knife Sharpening Systems • Edge Maintenance Tools • Professional Sharpening Services  
Circular Blade & Grinder Plate Sharpeners • Grinder Plates, Knives & Accessories • Sanitizer/Bacteria Reduction Washing Systems

\*All items, parts, and accessories listed on this sheet are manufactured by PRIMEEdge, Inc., or manufactured to PRIMEEdge, Inc.'s specifications. All original equipment manufacturer's names are listed with an asterisk (\*) to indicate that these items are manufactured by PRIMEEdge, Inc., and not the original equipment manufacturer. The names of the original equipment manufacturers referred to on this site are all registered trademarks of their respective companies. Unless specifically stated otherwise, PRIMEEdge, Inc. has no association or affiliation with any entities listed here on.