

Weiler®-Style 11" Grinder Plates

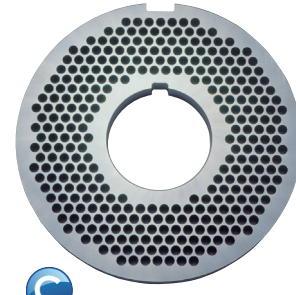
Premium-grade plates for every style of Weiler®-style meat grinder
Hardened tool steel for long life and quality performance



A



B



C

PRIMEEdge®
COZZINI CUTTING EDGES
AND SHARPENING SOLUTIONS

11" Conventional-style plates

A

#2113, Threaded center,
11" O.D., 2" I.D.

11" Conventional-style plates

B

#2114, Keyway center,
11" O.D., 2 1/8" I.D.

11" Conventional-style plates

C

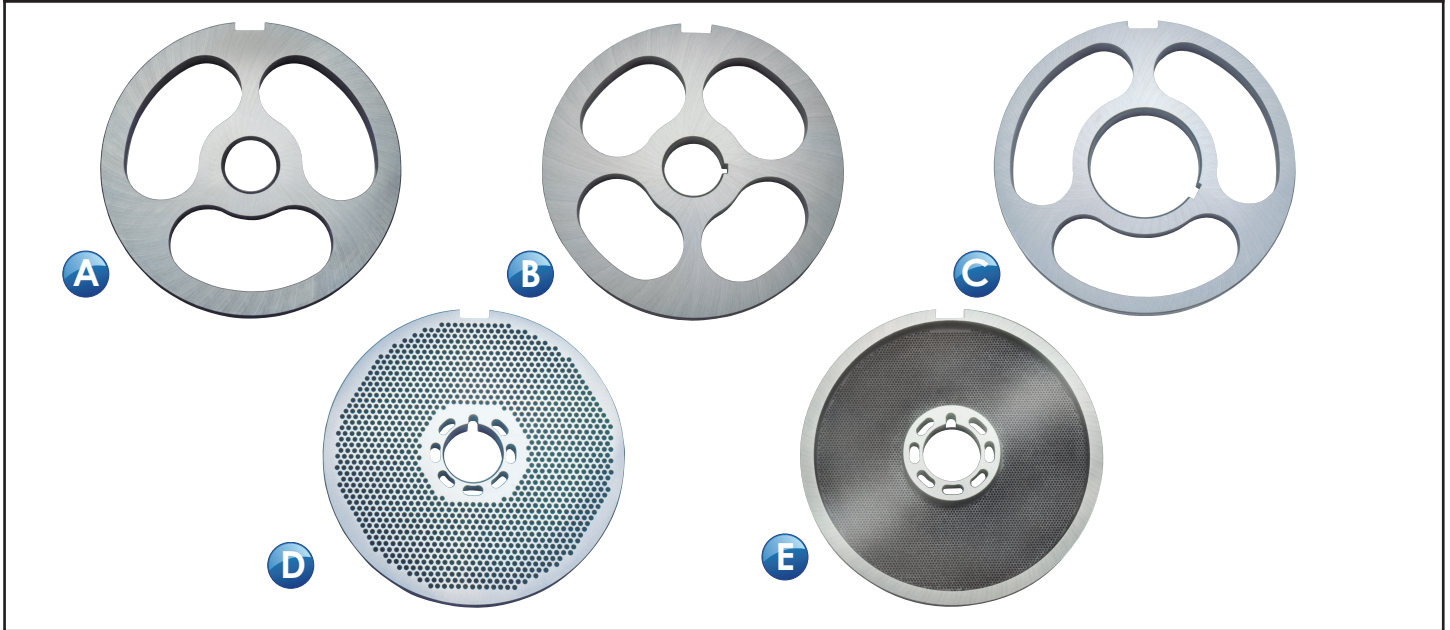
#2115, Keyway center,
11" O.D., 4" I.D.

Hole Size	PRIMEEdge Part No.	Weiler Part No.	PRIMEEdge Part No.	Weiler Part No.	PRIMEEdge Part No.	Weiler Part No.
1/16"	GPW-2113116	106-1021	GPW-2114116	106-1051	GPW-2115116	N.A.
5/64"	GPW-2113564	106-1022	GPW-2114564	106-1052	GPW-2115564	N.A.
3/32"	GPW-2113332	106-1000	GPW-2114332	106-1028	GPW-2115332	N.A.
7/64"	GPW-2113764	106-1001	GPW-2114764	106-1029	GPW-2115764	N.A.
1/8"	GPW-211318	106-1002	GPW-211418	106-1030	GPW-211518	106-1068
9/64"	GPW-2113964	106-1003	GPW-2114964	106-1031	GPW-2115964	106-1049
5/32"	GPW-2113532	106-1004	GPW-2114532	106-1032	GPW-2115532	106-1069
3/16"	GPW-2113316	105-1005	GPW-2114316	106-1033	GPW-2115316	106-1070
1/4"	GPW-211314	106-1007	GPW-211414	106-1035	GPW-211514	106-1072
5/16"	GPW-2113516	106-1008	GPW-2114516	106-1036	GPW-2115516	106-1073
3/8"	GPW-211338	106-1009	GPW-211438	106-1037	GPW-211538	106-1074
7/16"	GPW-2113716	106-1010	GPW-2114716	106-1038	GPW-2115716	106-1075
1/2"	GPW-211312	106-1011	GPW-211412	106-1039	GPW-211512	106-1076
5/8"	GPW-211358	106-1012	GPW-211458	106-1040	GPW-211558	106-1077
3/4"	GPW-211334	106-1013	GPW-211434	106-1041	GPW-211534	106-1078
1"	GPW-211301	106-1015	GPW-211401	106-1043	GPW-211501	106-1080
1 1/4"	GPW-21130114	106-1016	GPW-21140114	106-1044	GPW-21150114	106-1081
1 1/2"	GPW-21130112	106-1017	GPW-21140112	106-1045	GPW-21150132	106-1082
1 3/4"	GPW-21130134	N.A.	GPW-21140134	N.A.	GPW-21150134	N.A.
2"	GPW-211302	106-1018	GPW-211402	106-1046	GPW-211502	106-1083

PRIMEEdge®
COZZINI CUTTING EDGES
AND SHARPENING SOLUTIONS

877-322-EDGE(3343) • primedge.com • sales@primedge.com • Fax:224-265-6638

Weiler®-Style 11" Grinder Plates



A 11" Kidney-hole plates
#2113, Threaded center,
11" O.D. 2" I.D.

B 11" Kidney-hole plates
#2114 Keyway center,
11" O.D. 2¹/₈" I.D.

C 11" Kidney-hole plates
#2115 Keyway center,
11" O.D. 4" I.D.

No. of Holes	PRIMEdge Part No.	Weiler Part No.	PRIMEdge Part No.	Weiler Part No.	PRIMEdge Part No.	Weiler Part No.
2	GPW-211302H	106-1250	GPW-211402H	106-1249	GPW-211502H	106-1253
3	GPW-211303H	106-1258	GPW-211403H	106-1235	GPW-211503H	106-1248
4	GPW-211304H	N.A.	GPW-211404H	N.A.	GPW-211504H	N.A.
6	GPW-211306H	106-1259	GPW-211406H	106-1255	GPW-211506H	106-1252

D 11" Bone collector plates
#2437, Keyway center,
11" O.D. 2¹/₈" I.D.

Hole Size	PRIMEdge Part No.	Weiler Part No.
1/16"	GPW-2437116	106-1110
5/64"	GPW-2437564	106-1111
3/32"	GPW-2437332	106-1100
7/64"	GPW-2437764	106-1101
1/8"	GPW-243718	106-1102
9/64"	GPW-2437964	106-1103
5/32"	GPW-2437532	106-1104
3/16"	GPW-2437316	106-1105
1/4"	GPW-243714	106-1107

E 11" Bone collector plates
#2442, Recessed keyway center,
11" O.D. 2¹/₈" I.D.

Hole Size	PRIMEdge Part No.	Weiler Part No.
1/16"	GPW-2442116	106-1113
5/64"	GPW-2442564	106-1114
3/32"	GPW-2442332	106-1115
7/64"	GPW-2442764	106-1116
1/8"	GPW-244218	106-1117
9/64"	GPW-2442964	106-1118
5/32"	GPW-2442532	106-1119
3/16"	GPW-2442316	106-1120
1/4"	GPW-244214	106-1122

If you need larger hole sizes than those listed here in conventional or bone collector plate styles, call customer service at 877-322-EDGE (3343) for assistance.



877-322-EDGE(3343) • primedge.com • sales@primedge.com • Fax:224-265-6638

PRIMEdge, Inc. • Cutting Edges • Knife Sharpening Systems • Edge Maintenance Tools • Professional Sharpening Services
Circular Blade & Grinder Plate Sharpeners • Grinder Plates, Knives & Accessories • Sanitizer/Bacteria Reduction Washing Systems

All items, parts, and accessories listed on this sheet are manufactured by PRIMEdge, Inc., or manufactured to PRIMEdge, Inc.'s specifications. All original equipment manufacturer's names are listed with an asterisk () to indicate that these items are manufactured by PRIMEdge, Inc., and not the original equipment manufacturer. The names of the original equipment manufacturers referred to on this site are all registered trademarks of their respective companies. Unless specifically stated otherwise, PRIMEdge, Inc. has no association or affiliation with any entities listed here on.