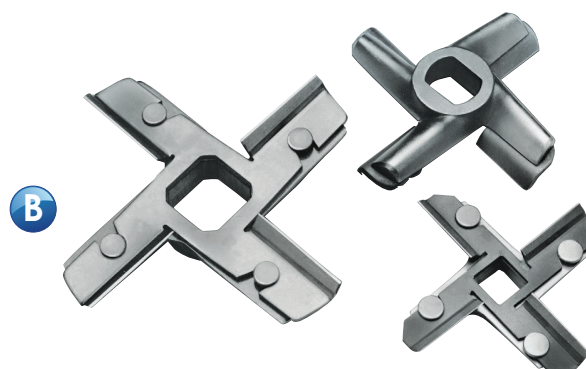
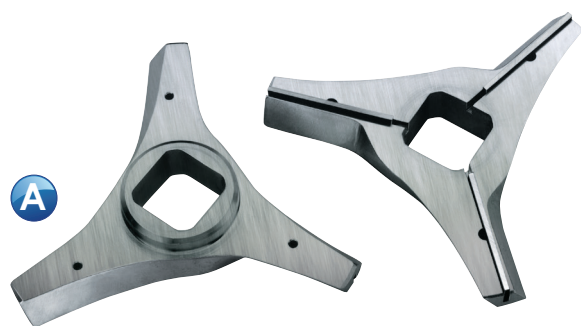


Standard Knife Holders & Inserts

PRIMEEdge standard knife holders & knife insert blades for American grinders



PRIMEEdge®
COZZINI CUTTING EDGES
AND SHARPENING SOLUTIONS

A Knives For Auto® Grinders

Double-cutting knives. The #1101 and #1102 four-arm knives fit 11" plates; the #801 three-arm knife fits 8⁵/₈" plates

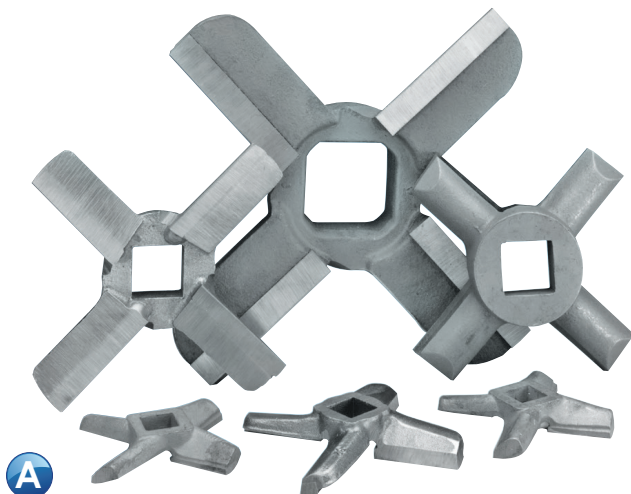
Holder No./Size	PRIMEEdge Part No.
#1101	GK-7-1101H
#801	GK-6AH
Insert Blades	
#1101	GK-7-1101/2I
#801	GK-6AB

B "Snap-On" Knife Holders & Insert Blades

These holders require no set screws, so they're extra-easy to clean. "Snap-On" knives can be used on most foreign and all U.S. meat grinders.

Holder No./Size	PRIMEEdge Part No.
#52 (5 ¹ / ₈ ")	GK-4SH
#56 (6")	GK-5SH
#66 (8 ⁵ / ₈ ")	GK-6SH
#11 (11")	GK-7SH
Insert Blades	
#52	GK-4SI
#56	GK-5SI
#66	GK-6SI
#11	GK-7SI

Standard Knife Holders & Inserts



A Hard-Edged Knives

Hard-edge knives feature a diamond-hard cutting edge solidly fused to the frame.

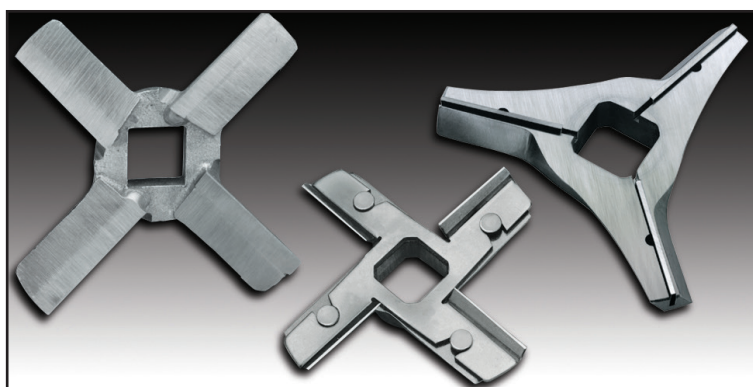


B Solid Drop-Forged Knives

Available in two-arm and four-arm models, for grinder sizes #12 to #66

Knife Length	PRIMEdge Part No.
#12 ($2\frac{7}{16}$ "	GK-12H
#22 ($2\frac{7}{8}$ "	GK-22H
#32 ($3\frac{9}{16}$ "	GK-32H
#52 ($4\frac{5}{8}$ "	GK-52H
#56 ($5\frac{1}{4}$ "	GK-56H
#66 ($7\frac{13}{16}$ "	GK-66H

Knife Length	PRIMEdge Part No.
#12 ($2\frac{7}{16}$ "	GK-12D
#22 ($2\frac{7}{8}$ "	GK-22D
#32 ($3\frac{9}{16}$ "	GK-32D
#52 ($4\frac{5}{8}$ "	GK-52D
#56 ($5\frac{1}{4}$ "	GK-56D
#66 ($7\frac{13}{16}$ "	GK-66D



PRIMEdge®
COZZINI CUTTING EDGES
AND SHARPENING SOLUTIONS

877-322-EDGE(3343) • primedge.com • sales@primedge.com • Fax:224-265-6638

PRIMEdge, Inc. • Cutting Edges • Knife Sharpening Systems • Edge Maintenance Tools • Professional Sharpening Services
Circular Blade & Grinder Plate Sharpeners • Grinder Plates, Knives & Accessories • Sanitizer/Bacteria Reduction Washing Systems

All items, parts, and accessories listed on this sheet are manufactured by PRIMEdge, Inc., or manufactured to PRIMEdge, Inc.'s specifications. All original equipment manufacturer's names are listed with an asterisk () to indicate that these items are manufactured by PRIMEdge, Inc., and not the original equipment manufacturer. The names of the original equipment manufacturers referred to on this site are all registered trademarks of their respective companies. Unless specifically stated otherwise, PRIMEdge, Inc. has no association or affiliation with any entities listed here on.